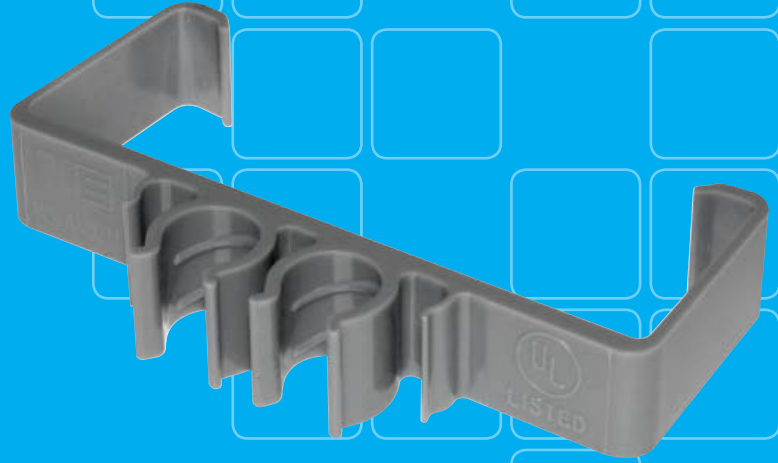


hangers & supports



Innovation. It's what Madison is all about. Check out our Madison Strap, the product that started it all. Invented in 1929 by our founder Earl Adkinson, Madison has been on the cutting edge of electrical products ever since. Our newest support innovation for the 21st century is the UL listed Clip-It. All of our hangers and supports are made of high quality materials and produced to exacting standards. From Madison Straps to Clip-It and everything in between, Madison has the hangers and supports you need to get the job done right!



CONDUIT HANGERS STAINLESS W/NUT & BOLT

Secures EMT or Rigid conduit to threaded rod, insulator supports, or mounting surface

Material: Stainless Steel - Type 301

Certifications: cULus Listed,
Federal Spec. W-F-40BE, NEMA: FB-1



ITEM#	RIGID	EMT	INNER QTY	MASTER QTY
0-WBAS	3/8"	1/2"	N/A	100
1-WBAS	3/4"	3/4"	N/A	100
2-WBAS	1"	1"	N/A	100
2-1/2-WBAS	-	1-1/4"	N/A	100
3-WBAS	1-1/4"	1-1/2"	N/A	100
4-WBAS	1-1/2"	-	N/A	100
5-WBAS	2"	2"	N/A	50
6-WBAS	2-1/2"	2-1/2"	N/A	50
7-WBAS	3"	3"	N/A	25
8-WBAS	3-1/2"	3-1/2"	N/A	25
9-WBAS	4"	4"	N/A	25

RIGID 1-HOLE STRAPS STEEL

Supports Rigid/IMC conduit to mounting surface

Material: Bright Zinc Electroplated Steel

Features: Reinforced rib & holes for extra strength.
Snap-on feature.

Notes: 2-1/2" - 4" suitable for EMT conduit



ITEM#	TRADE SIZE	INNER QTY	MSTR. QTY	ITEM#	TRADE SIZE	INNER QTY	MSTR. QTY
700	3/8"	100	1000	706	2"	10	50
701	1/2"	100	500	707	2-1/2"	10	50
702	3/4"	50	250	708	3"	5	25
703	1"	20	200	709	3-1/2"	5	25
704	1-1/4"	20	100	710	4"	5	25
705	1-1/2"	10	100				

RIGID 1-HOLE STRAPS MALLEABLE

Supports Rigid/IMC conduit to mounting surface

Material: Malleable Iron, Zinc Plated

Certifications: UL Listed

Features: Heavy duty casting



ITEM#	TRADE SIZE	INNER QTY	MSTR. QTY	ITEM#	TRADE SIZE	INNER QTY	MSTR. QTY
801	1/2"	25	250	807	2-1/2"	5	25
802	3/4"	25	250	808	3"	N/A	5
803	1"	25	125	809	3-1/2"	N/A	5
804	1-1/4"	20	100	810	4"	N/A	5
805	1-1/2"	10	100	811	5"	N/A	2
806	2"	10	50	812	6"	N/A	2

RIGID 2-HOLE STRAPS STEEL

Supports Rigid/IMC conduit to mounting surface

Material: Bright Zinc Electroplated Steel
(1/2"-1") Or Galvanized Steel (1-1/4"-4")

Certifications: cULus Listed (except 123)

Features: Reinforced rib or extra strength. Snap-on feature.



ITEM#	TRADE SIZE	INNER QTY	MSTR. QTY	ITEM#	TRADE SIZE	INNER QTY	MSTR. QTY
123	3/8"	100	500	129	2"	N/A	50
124	1/2"	100	500	130	2-1/2"	N/A	50
125	3/4"	50	250	131	3"	N/A	25
126	1"	25	125	132	3-1/2"	N/A	25
127	1-1/4"	N/A	50	133	4"	N/A	20
128	1-1/2"	N/A	50				

EMT 1-HOLE STRAPS STEEL

Supports EMT conduit to mounting surface

Material: Bright Zinc Electroplated Steel

Certifications: UL Listed (1/2" - 1" only)

Features: Reinforced rib & holes for extra strength.
Snap-on feature.



ITEM#	TRADE SIZE	INNER QTY	MSTR. QTY	ITEM#	TRADE SIZE	INNER QTY	MSTR. QTY
1701	1/2"	100	1000	1706	2"	20	100
1702	3/4"	100	500	1707	2-1/2"	10	50
1703	1"	100	500	1708	3"	5	25
1704	1-1/4"	20	200	1709	3-1/2"	5	25
1705	1-1/2"	20	100	1710	4"	5	25

EMT 2-HOLE STRAPS STEEL

Supports EMT conduit to mounting surface

Material: Bright Zinc Electroplated Steel
(1/2"-1") Or Galvanized Steel (1-1/4"-4")

Certifications: cULus Listed

Features: Reinforced rib for extra strength. Snap-on feature.

Notes: 130-133 for use with EMT and Rigid.



ITEM#	TRADE SIZE	INNER QTY	MSTR. QTY	ITEM#	TRADE SIZE	INNER QTY	MSTR. QTY
1124	1/2"	100	500	1129	2"	N/A	50
1125	3/4"	100	500	130	2-1/2"	N/A	50
1126	1"	50	250	131	3"	N/A	25
1127	1-1/4"	N/A	50	132	3-1/2"	N/A	25
1128	1-1/2"	N/A	50	133	4"	N/A	20